

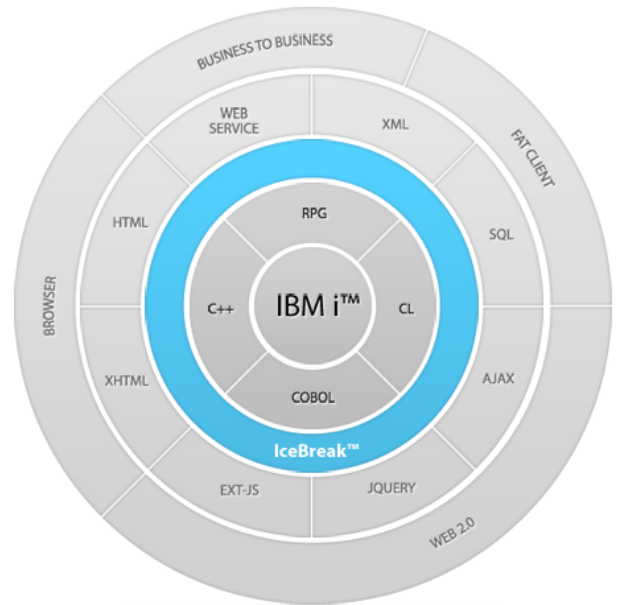
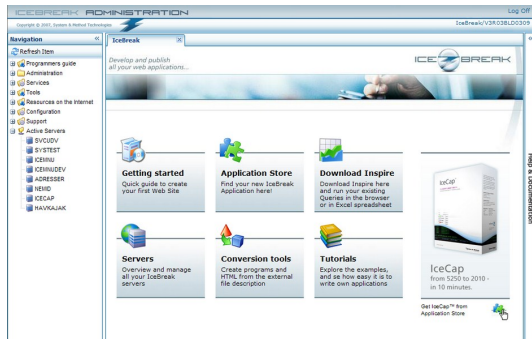
# What is IceBreak

Advanced Web Development Environment for IBM Power i (AS/400)

IceBreak is a powerful web application server that provides a highly reliable, manageable and scalable web application infrastructure for the IBM Power i. IceBreak runs natively on IBM Power i, iSeries, and AS/400 running V5R2 or higher and helps organizations increase web site and application availability while lowering system administration costs.

It has an integrated development feature that allows developers to build and deploy web applications using RPG, COBOL, C++ and even CLP. Technologies like SQL, XHTML, XML, Web Services and AJAX are part of the toolbox. IceBreak allows the separation of program business logic from the user interface developed in HTML, XHTML, or XML.

**No Java, No Apache, No WebSphere... Just IceBreak!**



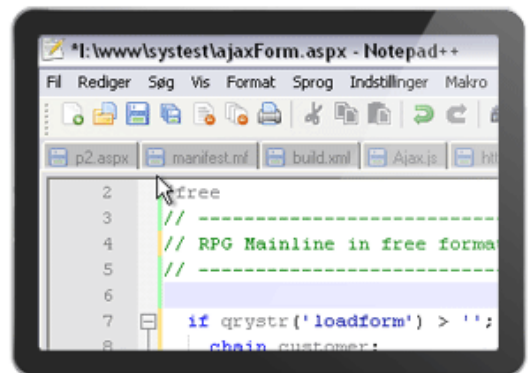
## IceBreak is middleware for IBM i

IceBreak integrates the ILE environment into the newest web technology, with no need for additional hardware or software. Between TCP/IP and the native i operating system - IceBreak runs RPG and COBOL programs that are real IBM Power i program objects.

IceBreak is a powerful advanced application server and does not require CGI, Java, PHP, Apache, WebSphere (WAS), PASE, WebFacing, HATS or third-party generator tools. IceBreak is the future web development for the ILE environment on IBM Power i.

## The key aspects of IceBreak

One of the key aspects of IceBreak is that users can develop their HTML screens in any development tool, including Visual Studio, RDi, or even a simple text editor like Notepad++. The actual HTML files are developed in the third-party HTML editor of your choice. The IceBreak development and runtime components handle the integration of HTML with the RPG or COBOL source. IceBreak actually borrows many aspects of the integrated ASP.NET-IIS development and runtime combo. "The syntax used in IceBreak is the same as you've got in ASP and just like in .NET. IceBreak has "Just In Time" compiler technology as the design is similar to the way that IIS is designed.



# Power i programming power at your fingertips

IceBreak lets you develop, build and deploy IBM Power i web applications faster – using RPG or COBOL embedded SQL and XML.

A native application server for IBM Power i, IceBreak is designed to take the pain out of programming. Just use your preferred tool to develop web applications – without learning Java or working in difficult-to-manage combined program code and HTML environments – and then simply deploy it to IBM Power i.

## Application flexibility

Whether you need to deploy legacy IBM Power i applications to the web or develop new native web applications, IceBreak makes programming easy and highly flexible.

## With IceBreak, you can;

- ◆ Enhance existing web applications or create new ones
- ◆ Build websites and web services
- ◆ Provide handheld access to your company's ERP system
- ◆ Design web portals that customers, suppliers and mobile workers can access online
- ◆ Create Word documents, Excel spread sheets, Oracle databases and much more



## IceBreak Enterprise Edition

IceBreak Enterprise is the developer tool that compiles RPG and COBOL programs into web applications running on IBM Power i. This package guarantees the professional result.

IceBreak allows the development web 2.0 applications with technologies such as SQL, XHTML, XML, extJS, Web Services, and AJAX.

IceBreak applications range develop new programs as well as enhancement of existing legacy code. The applications can be displayed in all types of browsers including the browsers in handheld devices.

