

The IceBreak Workflow Server collects and organizes the company documents in a well arranged hierarchic structure. The structure is set up individually and can reflect the work routines within the company.

The IceBreak Workflow Server can open a portal on the internal network or optionally on the Internet for employees, customers, suppliers and other co-operating partners.

Documents

All types of documents can be organized in the document part. The physical location of the documents is not of vital importance for the structure, as this is built via logic links to the documents.

This technique makes it possible to refer to the same document from more than one place within the structure, and being able to place the documents on other servers.

The logic links can refer to information and documents on the Internet – and in that way organize a ‘knowledge portal’ for the users.

Programs developed in IceBreak Enterprise can also be included in the structure via logic links. This way, one click can start an online session or commence a process running in the background.

A logic link can also refer to a certain level within the structure which is used often - by which the logic link will function as a shortcut.

Documents can be reorganized using drag and drop within the structure.

When new documents are assigned to the structure the user chooses whether the document is physically saved or whether it is referred to via a link. Further the user needs to enter search keys as required for the concerned structure level.

Framework

The IceBreak Workflow Server can also be delivered as an open Framework, where further functions can be added and the layout changed to reflect existing internet pages.

This Framework can be further expanded using the IceBreak development tools.

Properties

Search keys are also a part of the documents properties. These are shown in columns next to the individual document. A search key can also be converted to an icon, using a table - and e.g. as a flag visualize the document status.

The screenshot displays the IceBreak Workflow Server interface. On the left, a 'Collection tree' shows a hierarchical structure of folders. The 'Received' folder is expanded, showing sub-folders like 'DREAM', 'EXPRESS', 'IT', 'READY', 'RETURN', 'TARGET', and 'VISION'. Other folders include 'Recycle Bin', 'Dealer 30327-30332', 'Released', 'Processed', 'Invoices', 'Links', 'Product Sheets', 'Programs', and 'Product list'. On the right, a 'Link information' table is shown for the 'DREAM' folder. The table has columns for 'Dokument', 'Mærke', and 'Model'. Below the table, there is a search bar, a page indicator 'Page 1 of 1', and a toolbar with icons for printing, saving, and navigation. At the bottom right, there is a logo for 'SKAT' and text: 'Firmastempel CONCEPT HÅNDVÆRKE 2970 HØRSH'.

Dokument	Mærke	Model
Certifikat	CONCEPT	DREAM TREND PLUS
Certifikat	CONCEPT	DREAM C-MAX GHIA
Certifikat	CONCEPT	DREAM C-MAX GHIA
Certifikat	CONCEPT	DREAM C-MAX AMBI

Flexible search - provides fast access

Known information about the required document is entered in a field and the present level in the structure and all underlying levels are searched for matching information. As the search function uses same technique and syntax as the search engines on the Internet, the required document is found in a selection of matching documents.

Personal design

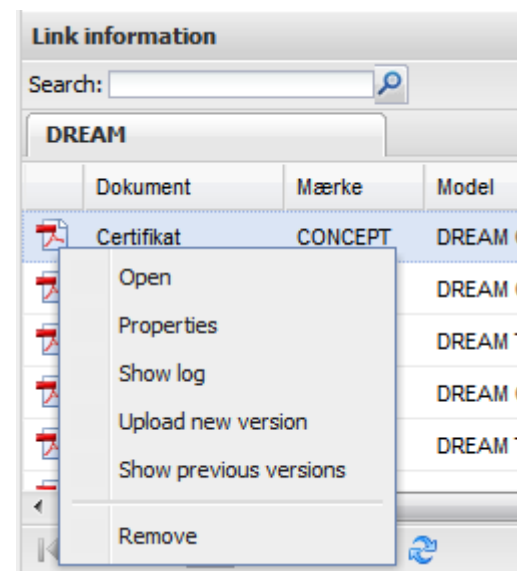
Sorting on columns gives a more personal presentation - and opens the possibility for faster retrieval of documents with common information. The individual user decides which columns are displayed and also the order of the columns.

Access Control

The build-in authorization system controls the publishing of the documents via a sensitive filter. Ice-Break Workflow Server only presents the specific part of the structure and the documents, which the user or user group in question have access to.

For instance the authorization system can distinguish between three types of users - anonymous users, web-profile users and IBM Power i (AS/400) users.

Anonymous users will often be able to view a very limited part of the structure - e.g. product catalogues and public documents. Web-profile users will be able to view own documents - while IBM Power i users will be able to work with transmissions, print and documents.



The basic setup predefined authorization system can be expanded within the Framework to include more customer specific scopes - which can be used for look-up in the customers databases.

Events

At all levels the Framework can be assigned in one or more events, by which processes and work routines can be activated using the IceBreak Workflow Server. For example a double click can open a PDF-file and at the same time change the search key "status" from "received" to "read". Further the search key can visualize this change by switching the icon from a closed envelope to an open envelope.

Events can also be activated by placing the mouse over the involved document - by which a small menu displays various options e.g. the event "Approved" could change the search key "Status" and under the search key "Invoice" mark the document as approved.

Organizes PDF-documents from InterForm.

Using an included API program, the IceBreak Workflow Server can receive and organize PDF documents from InterForm.

In one process InterForm extract search keys from the print and generates the PDF documents including the overlay for delivery on the document Work-flow Server.

To request a 30 day evaluation please contact sales@spacetec.co.uk or visit our website www.spacetec.co.uk

Spacetec Ltd 'Lindisfarne' Church Road, Westoning, Bedfordshire MK45 5JW

Tel: 01525 713045 Fax:01525 716079 www.spacetec.co.uk